



Product News

Now Available

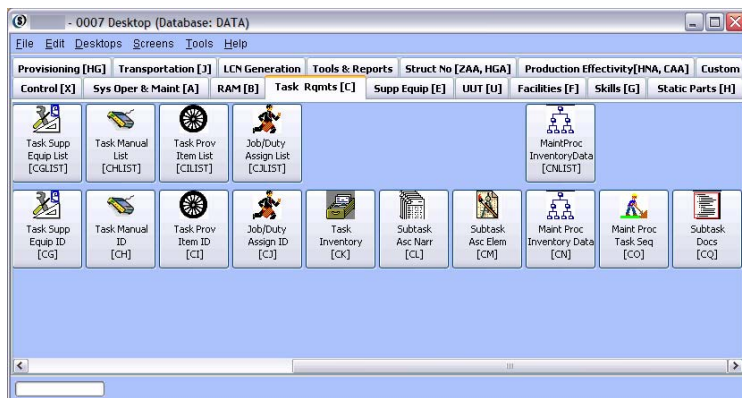
Integrated Support Systems, Inc. (ISS) is pleased to announce the immediate availability of SLICwave® v5.2. This new version of SLICwave® includes expanded support for the latest supportability standards, plus many enhanced features and capabilities, as well as operating systems upgrades. In addition, v5.2 includes all features and capabilities introduced in Service Packs distributed since the release of SLICwave® v5.1.

New Capabilities

GEIA-STD-0007 Support

SLICwave now supports GEIA-STD-0007 “Logistics Product Data”. Organizations that need to manage their existing/legacy programs with SLICwave, but also have new requirements for GEIA-STD-0007, can simply add support for GEIA-STD-0007 to their existing SLICwave license. For projects without requirements for legacy standards, SLICwave v5.2 can be configured for only GEIA-STD-0007 support.

Data migration utilities enable existing SLICwave project data to be converted and used in support of the GEIA-STD-0007 format. This upward capability feature allows organizations to continue working under MIL-STD-1388-2B/LMI requirements as needed and transition to GEIA-STD-0007 as appropriate/applicable.



SLICwave/0007 Desktop

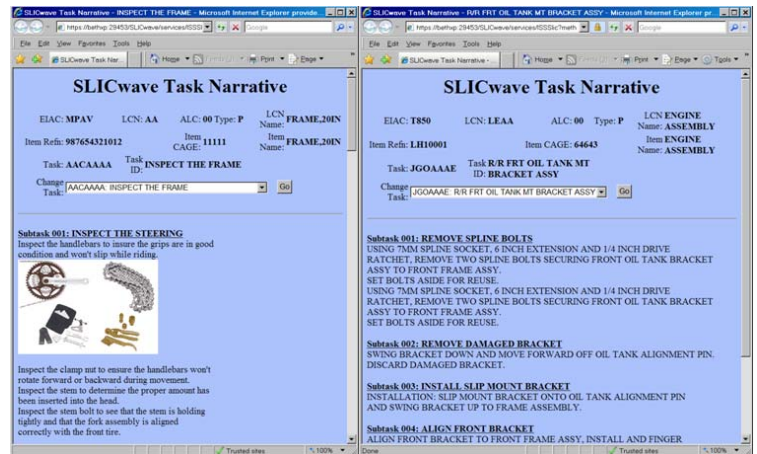
ASD-S2000M V.3.0, CHG 1

formerly AECMA Spec 2000M

With SLICwave® v5.2, you have multiple-version compliance with the SLIC/2000M™ module. V5.2 now supports ASD-S2000M V.2.1, CHG 4, as well as ASD-S2000M V.3.0, CHG 1.

Consolidated Task Summary

SLICwave® v5.2 offers a new screen showing ALL the task narratives associated with a particular task (all subtask narratives for the task) in a very easy to see/use HTML window. This new capability is designed to streamline and assist with the task creation and review processes.



Task Narrative Screens

Audit Reporting

Auditing has been significantly enhanced in SLICwave® v5.2. A complete web-based Auditing toolkit is now provided to all SLICwave® users and offers the same power, flexibility, and control generally associated with other SLICwave® security features. Auditing has been redesigned to have only minimal impacts to system performance.

Customize Labels

SLICwave® v5.2 provides the capability to change/customize the names of tabs on existing screens (including customizing the numbered tabs created in Adhoc).

SLICwave® Adhoc screen with numbered tabs (before customization)

SLICwave® Adhoc screen after customization

...and there's MORE!

- A completely new, more intuitive installation/upgrade process.
- New utilities for SLICwave® administration and Oracle setup.
- Spell checking for narrative.
- Security enhancements in table-based security, and data field security (DFS) enforced by all interfaces.
- Enhanced database performance – particularly for Oracle users, users with large databases and users of SLIC/CM-L™.

SLICwave® v5.2 Environment Upgrades

SLICwave® v5.2 adds support for the following operating environments:

- Operating Systems: MS Vista, Solaris 10
- DBMS: Oracle 10.2g
- Java: JDK/JRE 1.6 (MS Windows, Solaris)

About SLICwave®

SLICwave® is the world's leading through-life supportability analysis software. Featuring cutting-edge analysis capabilities in an extremely flexible, easy-to-use interface, SLICwave® enables organizations to realize significant improvements in product supportability.

About ISS

Integrated Support Systems, Inc. (ISS) is committed to providing the most effective software, training, and services solutions for



product supportability, product lifecycle management (PLM), configuration management (CM), and product collaboration – with particular focus on the aerospace and defense industry.

ISS and our strategic partners provide solutions to over 800 customers in 15 countries around the world. We are headquartered in South Carolina with European offices near Paris France.