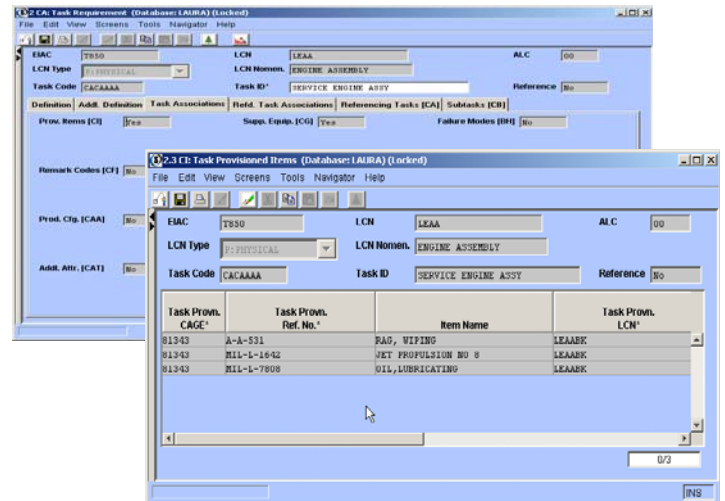




Product Overview

SLICwave® v5.1 is the next generation in product lifecycle support information management software from ISS. SLICwave provides cutting-edge capabilities in an extremely flexible, easy-to-use interface. Countless new features and system improvements from the SLIC user community have been incorporated into v5.1.

The SLICwave user interface, developed in Java and XML, provides a consistent, functional, and powerful graphical user interface that simplifies and vastly improves the user experience.



SLICwave v5.1 Task Requirement Screens

SLICwave v5.1

- New process-oriented screens
- Easy-to-use “find and replace” feature
- Graphical navigator (similar to Windows Explorer) enhances visibility to the database
- Enhanced, yet simplified batch system makes easy work of defining and running jobs
- Integrated e-mail support allows database or report information to be distributed immediately, including applicable web links (URLs).
- Flexible data Export/Import capability (with filters) supports various data exchange formats (CSV, XML, and fixed ASCII)
- SLICweb™ provides HTML/web browser access to your database (no local software)
- SLICwave’s already powerful security system now simpler and easy to use.
- Apply notes and comments against any field to communicate concerns to others
- More powerful prompting capability monitors data threshold values (with automatic notification)
- Customizable help information supports project specific requirements and user instructions
- LMI-tailorable edit values to meet your project requirements
- Supports additional data attributes for a part, LCN, or task

A Closer Look

Powerful New Process-Oriented Screens

SLICwave screens are designed for ease-of-use through a standard MS-Windows setup equipped with exciting new functionality:

- Related screens are intuitively connected using Yes/No or data existence fields that enable users to seamlessly traverse the data model and access subordinate data.
- Standard Windows clipboard functionality is supported, as is intelligent pasting of data by matching on data fields.
- Delivered screen names reflect both their functional name of the screen (i.e., Part ID), and the table name (i.e., HA). Names are easily customizable by the user.
- New screens provide the ability to search through a narrative.
- Narrative can be viewed with or without line numbers.
- New PLISN screen allows you to quickly navigate and review your PLISN structure.



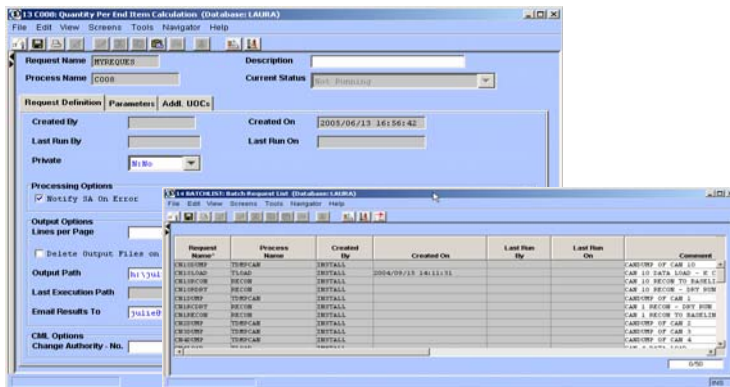
Customize, Organize and Prioritize with the SLICwave Desktop

The SLICwave v5.1 desktop allows users to customize, organize and prioritize information in easy-to-use tabbed folders. Within each of these tabs, icons provide “one-click” access to both delivered and ADHOC screens. Support of multiple desktops has been added to segregate and support ASD S2000M, Def Stan 00-60, CM-L, FMECA add-on products; plus, System Administration functionality has its own desktop. The new Tab Names reflect both the Functional Area name (i.e., R&M, Task Analysis, etc.) and related data area (i.e., B, C, etc.).

Quick and Easy Navigation

The SLICwave v5.1, Windows Explorer-style navigators provide a quick way to navigate LCN and BOM hierarchy and related data. In addition these new features have been added for the user's benefit:

- Navigator options provide the capability to expand or collapse all nodes at once.
- The new Refresh button allows you to see newly created data.
- Navigator Help is available from the Navigator window.
- The Search Bar gives you the ability to search through Navigator retrieved data.



Batch Request Screen and Batch Request List

Enhanced, Yet Simplified Batch System

The SLICwave v5.1 Batch System has been simplified and expanded to make running your jobs easy. The Batch Submittal process is fully integrated in layout and presentation of both batch requests and parameters using tabs, list boxes, check boxes, radio boxes, and combo boxes.

- Batch parameter selection and review are provided using Select and GoTo functionality.
- Batch process results can now be sent to users as attachments or as an URL link in an e-mail. Results can be automatically accessed at any time after a request is run with a single click of an icon.
- Multiple batch jobs can be selected to be issued at one time.

Export/Import Capability

The improved Export/Import Capability in SLICwave v5.1 lets the user export data from any screen and is supported by multiple exchange formats including CSV, XML, and fixed ASCII. In addition, there are several new Export/Import capabilities:

- Results can be sent as an attachment in an e-mail.
- Export filters data based on user-defined operands and Listbox filters give users more control over the amount and type of data being exported.
- Format of data exported inherits screen layout customization. For example, if a Listbox column is hidden, data in that column is not exported.

SLICwave v5.1 is Web-Enabled*

SLICwave v5.1 is equipped with Web capability (SLICweb™) which provides access to data via a Web browser.

- SLICwave's “Port 80 access” enables the use of SLICwave Java application client over the internet.
- SLIC/VISTA is available as an add-on capability that provides web access to the data. Customized reports can be developed and provided via ISS technical services. VISTA provides robust search and comparison capabilities allowing you to compare report outputs generated at different times and highlight differences.
- Web access to data on all delivered and Adhoc screens is provided.

**Geographically restricted licenses must migrate to geographically unrestricted licenses in order to benefit from web enabled features.*

SLICwave v5.1 Security

The simplified security system in SLICwave v5.1 offers the same powerful features as SLIC/2B to protect access to data down to the field and/or data value – plus more.

- Powerful Security capability located on System Administrator Desktop provides the ability to easily set up and review security.
- Value Based Security (VBS) enhanced to provide ability to restrict access not only by LCN and Reference Number but also by Task Code.

About ISS

Integrated Support Systems, Inc. is committed to providing the most effective software, training, and services solutions for product life cycle support, product data management (PDM), configuration management (CM), and product collaboration – with particular focus on the aerospace and defense industries.

ISS and our strategic partners provide solutions to over 700 customers in 15 countries around the world. We are headquartered in South Carolina with European offices located near Paris, France.